



GE INDUSTRIAL MOTORS
a **WOLONG** company

Product Information Packet

August 7, 2020

Data shown is for the current revision model #. Ensure your nameplate model # matches.

Model Number:	5KFE162ZWL3102
Catalog Number:	--
Instruction Manual:	GEI-M1052-SP
Connection Diagram:	--
Outline Drawing:	358B6965AB

Accessory Connection Diagrams			
Bearing Thermocouple:	None	Heater:	None
RTD:	None	Thermistor:	--
Thermostat:	None	Winding Thermocouple:	None
Bearing RTD:	None		

Table of Contents	
Specification	01
Performance Characteristics	02
Outline Drawing	03
Connection Drawing(s)	04

Marks:

MODEL NUMBER:	5KFE162ZWL3102	Estimated Weight(kg):	110
Outline Drawing:	358B6965AB	Duty:	S1
Connection Diagram:	--	Enclosure:	TEFC
Connection:	DELTA / WYE	Encl Construction:	Energy Saver
Instruction Book:	GEI-M1052-SP	Cooling (IC):	411
Design Code:	NA	Protection (IP):	55
Type:	KFE	Ambient Max (°C):	40
Frame:	160M	Alt Ambient Max(°C):	--
Mounting (IM):	B3	Ambient Min(°C):	-15
Phases:	3	Insulation Class:	F
Poles:	6	IEC Design:	N
Output Power:	10HP/7.5kW	Nominal Efficiency (%):	IE2-87.2
RPM:	960	Guaranteed Efficiency (%):	85.3
Voltage(V):	400/690	Power Factor (%):	78
Hertz:	50	Bearing - DE:	6309/2Z C3
Amps - FL:	15.9/9.2	Bearing - ODE:	6307/2Z C3
Service Factor:	1.15	Vibration (mm/s) rms:	2.2
Alt Service Factor:	--		

Enclosure is Totally Enclosed Fan-Cooled

Stamped Nameplate Notes:**Additional Information:**

SUITABLE FOR DOL STARTING
 ROTATION: CW VIEWED FROM DE
 INVERTER DUTY PER IEC TS 60034-25, SECTION 18
 INVERTER RATED PWM 20:1 VARIABLE TORQUE, 1.0 SF



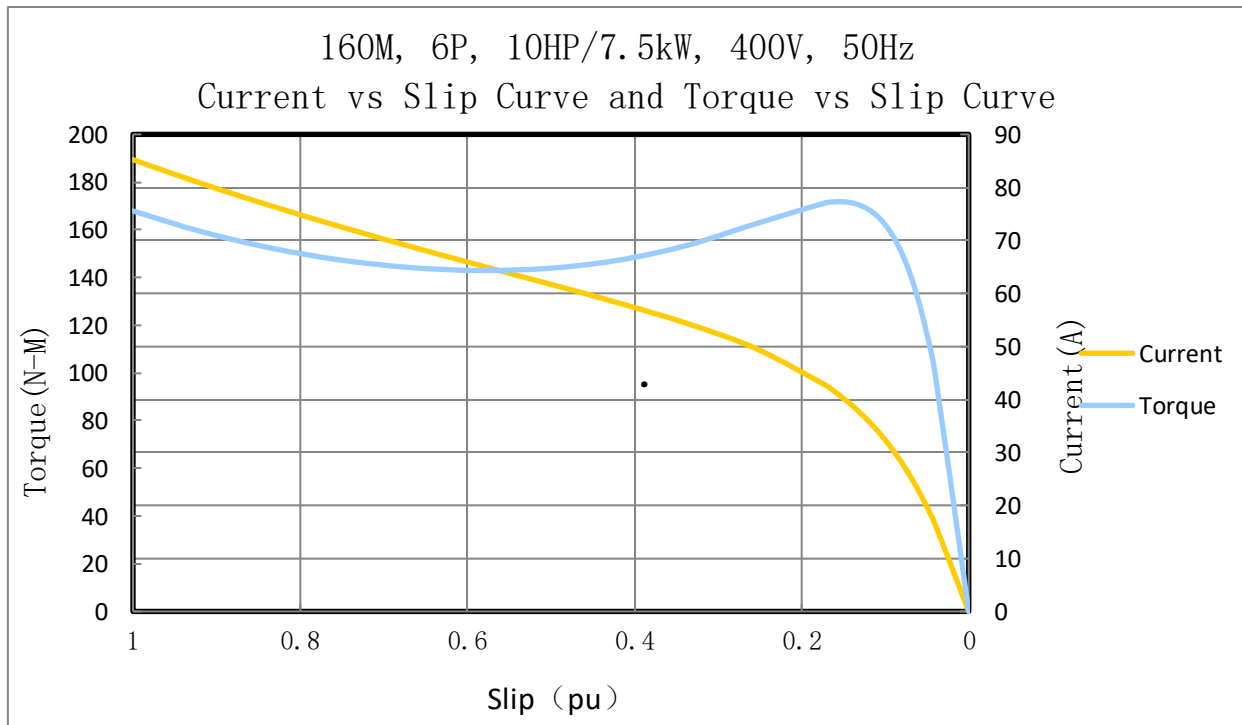
Performance Characteristic:

LOAD %	125.0	115.0	100.0	75.0	50.0	25.0	0.0
% EFF	86.25	86.87	87.60	88.22	87.61	83.10	0.00
% PF	82.72	82.39	81.27	76.73	66.41	44.44	23.23
AMPS	18.97	17.39	15.21	12.00	9.30	7.33	6.67

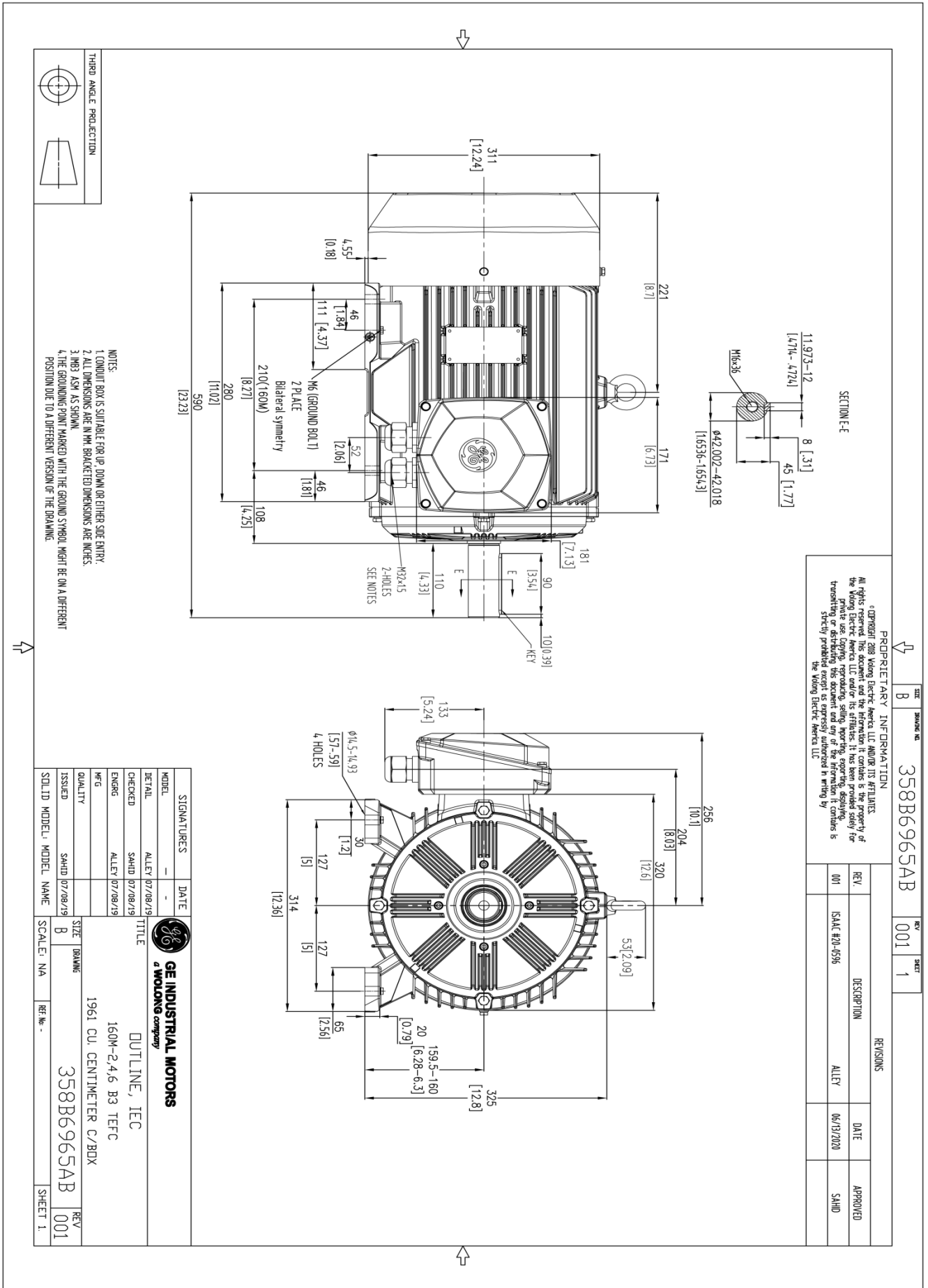
TORQUE(FL) N-m 74.2 TORQUE(LR)%FL 226 TORQUE(BD)%FL 221
 AMPS(LR 400V) 85.3 PF AT START 23.23%

Other Useful Information for Application:

Rotor Inertia (Kg-m ²) :	0.11661
Max load inertia (Kg-m ²):	5.722
Load Type:	Square Torque/Speed Characteristic
Voltage:	100%
Number of starts per hour:	2 Cold or 1 Hot
Acceleration Time with maximum inertia (sec):	4.7
Safe stall time (sec): Cold/Hot	31.4/12.8



Marks:

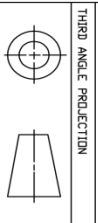


PROPRIETARY INFORMATION

© Copyright 2018 Wabtec Electric America LLC AND/OR ITS AFFILIATES. All rights reserved. This document and the information it contains is the property of the Wabtec Electric America LLC and/or its affiliates. It has been provided solely for private use (copying, reproducing, selling, importing, exporting, displaying, transmitting or distributing this document and any of the information it contains is strictly prohibited) and may be used in writing by the Wabtec Electric America LLC.

REV	DATE	DESCRIPTION	APPROVED
001	06/19/2020	ALLEY	SHAD

- NOTES:
1. CONDUIT BOX IS SUITABLE FOR UP, DOWN OR EITHER SIDE ENTRY.
 2. ALL DIMENSIONS ARE IN MM, BRACKETED DIMENSIONS ARE INCHES.
 3. M6'S AS SHOWN.
 4. THE GROUNDING POINT MARKED WITH THE GROUND SYMBOL MIGHT BE ON A DIFFERENT POSITION DUE TO A DIFFERENT VERSION OF THE DRAWING.



SIGNATURES	DATE	<p>GE INDUSTRIAL MOTORS a Wabtec company</p> <p>DUTLINE, IEC 160M-2.4.6 B3 TEFC 1961 CU. CENTIMETER C/BOX</p> <p>358B6965AB</p>					
MODEL	-						
DETAIL	ALLEY 07/08/19						
CHECKED	SHAD 07/08/19						
ENGR	ALLEY 07/08/19						
MFG							
QUALITY							
ISSUED	SHAD 07/08/19	SIZE	B	SCALE	NA	REV	001
SOLID MODEL	MODEL NAME						

REV 001