



GE INDUSTRIAL MOTORS
a **WOLONG** company

Product Information Packet

August 7, 2020

Data shown is for the current revision model #. Ensure your nameplate model # matches.

Model Number:	5KFE222ZWL1120
Catalog Number:	--
Instruction Manual:	GEI-M1052-SP
Connection Diagram:	--
Outline Drawing:	358B6968AB

Accessory Connection Diagrams

Bearing Thermocouple:	None	Heater:	None
RTD:	None	Thermistor:	--
Thermostat:	None	Winding Thermocouple:	None
Bearing RTD:	None		

Table of Contents

Specification	01
Performance Characteristics	02
Outline Drawing	03
Connection Drawing(s)	04

Marks:

MODEL NUMBER:	5KFE222ZWL1120	Estimated Weight(kg):	318
Outline Drawing:	358B6968AB	Duty:	S1
Connection Diagram:	--	Enclosure:	TEFC
Connection:	DELTA / WYE	Encl Construction:	Energy Saver
Instruction Book:	GEI-M1052-SP	Cooling (IC):	411
Design Code:	NA	Protection (IP):	55
Type:	KFE	Ambient Max (°C):	40
Frame:	225M	Alt Ambient Max(°C):	--
Mounting (IM):	B3	Ambient Min(°C):	-15
Phases:	3	Insulation Class:	F
Poles:	2	IEC Design:	N
Output Power:	60HP/45kW	Nominal Efficiency (%):	IE2-92.9
RPM:	2960	Guaranteed Efficiency (%):	91.8
Voltage(V):	400/690	Power Factor (%):	89
Hertz:	50	Bearing - DE:	6312/C3
Amps - FL:	79.0/45.6	Bearing - ODE:	6312/C3
Service Factor:	1.15	Vibration (mm/s) rms:	2.2
Alt Service Factor:	--		

Enclosure is Totally Enclosed Fan-Cooled

Stamped Nameplate Notes:Additional Information:

SUITABLE FOR DOL STARTING
 ROTATION: CW VIEWED FROM DE
 INVERTER DUTY PER IEC TS 60034-25, SECTION 18
 INVERTER RATED PWM 20:1 VARIABLE TORQUE, 1.0 SF



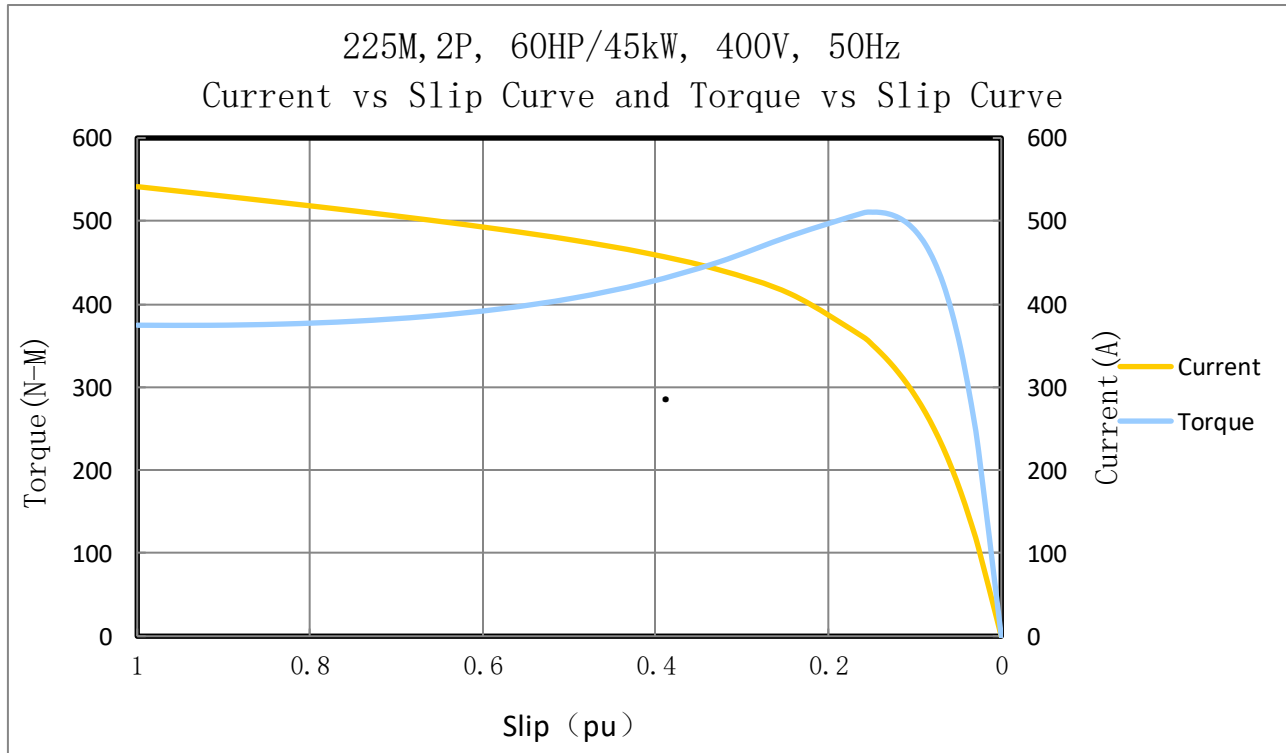
Performance Characteristic:

LOAD %	125.0	115.0	100.0	75.0	50.0	25.0	0.0
% EFF	92.68	92.90	93.19	93.41	93.07	90.61	0.00
% PF	93.74	93.66	93.33	91.59	86.92	70.39	40.78
AMPS	93.45	85.85	74.68	56.94	40.15	25.46	19.28

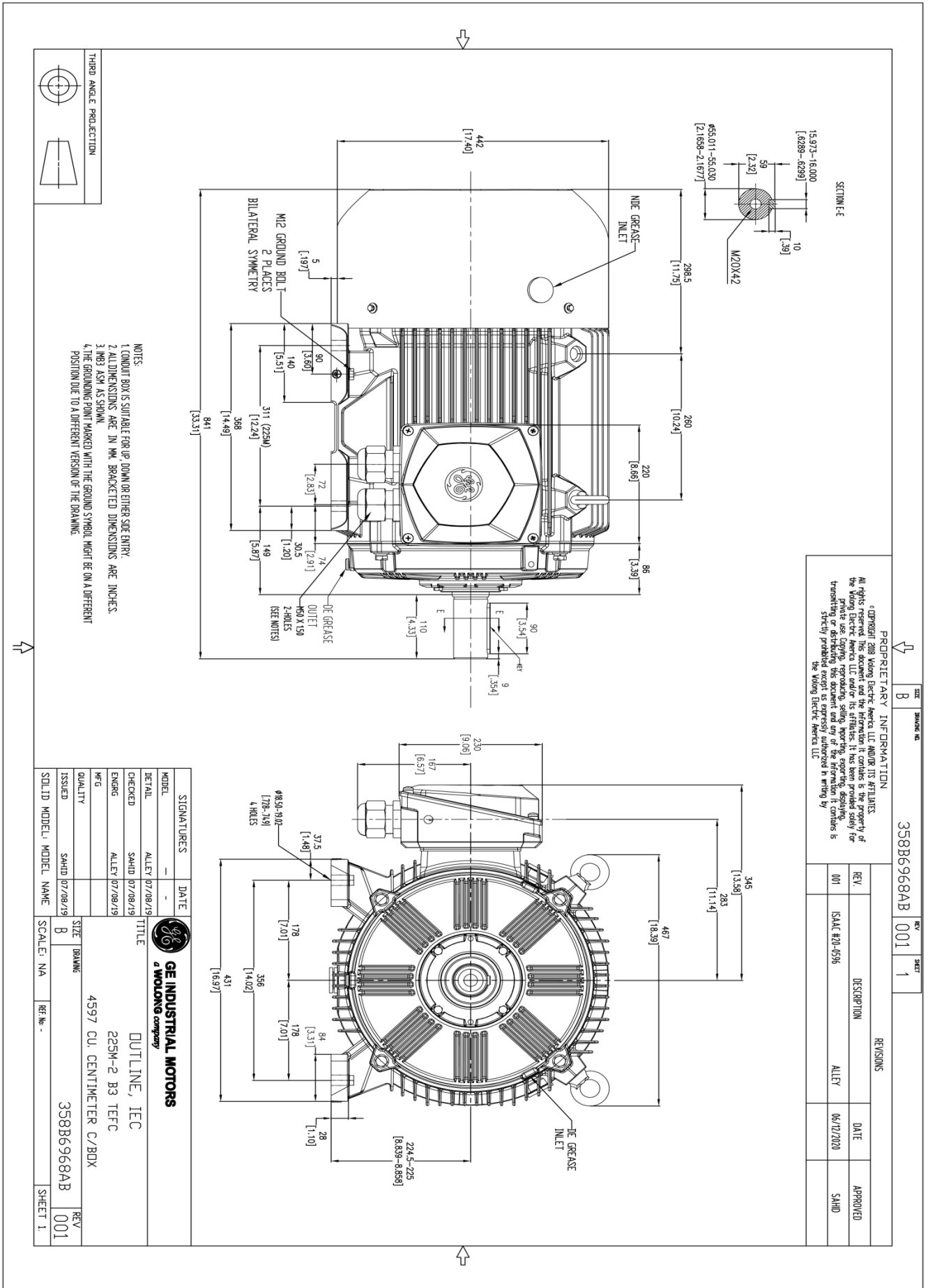
TORQUE(FL) N-m 145.9 TORQUE(LR)%FL 257 TORQUE(BD)%FL 344
 AMPS(LR 400V) 540.7 PF AT START 40.78%

Other Useful Information for Application:

Rotor Inertia (Kg-m ²) :	0.35520
Max load inertia (Kg-m ²):	2.44412
Load Type:	Square Torque/Speed Characteristic
Voltage:	100%
Number of starts per hour:	2 Cold or 1 Hot
Acceleration Time with maximum inertia (sec):	2.1
Safe stall time (sec): Cold/Hot	20.3/11.8



Marks:



PROPRIETARY INFORMATION

© COPYRIGHT 2018 Waling Electric America LLC AND/OR ITS AFFILIATES. All rights reserved. This document and the information it contains is the property of the Waling Electric America LLC and/or its affiliates. It has been provided solely for private use (copying, reproducing, selling, importing, exporting, displaying, transferring or distributing this document and any of the information it contains is strictly prohibited) and is not to be used for any other purpose without the written consent of the Waling Electric America LLC.

REV	DATE	DESCRIPTION	APPROVED
001	06/12/2020	ALLEY	SHAD

358B6968AB 001 1