



**GE INDUSTRIAL MOTORS**  
a **WOLONG** company

# Product Information Packet

August 26, 2020

Data shown is for the current revision model #. Ensure your nameplate model # matches.

<b>Model Number:</b>	<b>5KFE291ZWL1122</b>
<b>Catalog Number:</b>	--
<b>Instruction Manual:</b>	GEI-M1052-SP
<b>Connection Diagram:</b>	--
<b>Outline Drawing:</b>	358B6970AA

## Accessory Connection Diagrams

<b>Bearing Thermocouple:</b>	None	<b>Heater:</b>	None
<b>RTD:</b>	None	<b>Thermistor:</b>	--
<b>Thermostat:</b>	None	<b>Winding Thermocouple:</b>	None
<b>Bearing RTD:</b>	None		

## Table of Contents

Specification	01
Performance Characteristics	02
Outline Drawing	03
Connection Drawing(s)	04

**Marks:**

<b>MODEL NUMBER:</b>	5KFE291ZWL1122	<b>Estimated Weight(kg):</b>	504
<b>Outline Drawing:</b>	358B6970AA	<b>Duty:</b>	S1
<b>Connection Diagram:</b>	--	<b>Enclosure:</b>	TEFC
<b>Connection:</b>	DELTA / WYE	<b>Encl Construction:</b>	Energy Saver
<b>Instruction Book:</b>	GEI-M1052-SP	<b>Cooling (IC):</b>	411
<b>Design Code:</b>	NA	<b>Protection (IP):</b>	55
<b>Type:</b>	KFE	<b>Ambient Max (°C):</b>	40
<b>Frame:</b>	280S	<b>Alt Ambient Max(°C):</b>	--
<b>Mounting (IM):</b>	B3	<b>Ambient Min(°C):</b>	-15
<b>Phases:</b>	3	<b>Insulation Class:</b>	F
<b>Poles:</b>	2	<b>IEC Design:</b>	N
<b>Output Power:</b>	100HP/75kW	<b>Nominal Efficiency (%):</b>	IE2-93.8
<b>RPM:</b>	2970	<b>Guaranteed Efficiency (%):</b>	92.9
<b>Voltage(V):</b>	400/690	<b>Power Factor (%):</b>	89
<b>Hertz:</b>	50	<b>Bearing - DE:</b>	6314/C3
<b>Amps - FL:</b>	130.0/75.1	<b>Bearing - ODE:</b>	6314/C3
<b>Service Factor:</b>	1.15	<b>Vibration (mm/s) rms:</b>	2.2
<b>Alt Service Factor:</b>	--		

Enclosure is Totally Enclosed Fan-Cooled

---

**Stamped Nameplate Notes:****Additional Information:**

SUITABLE FOR DOL STARTING  
 ROTATION: CW VIEWED FROM DE  
 INVERTER DUTY PER IEC TS 60034-25, SECTION 18  
 INVERTER RATED PWM 20:1 VARIABLE TORQUE, 1.0 SF



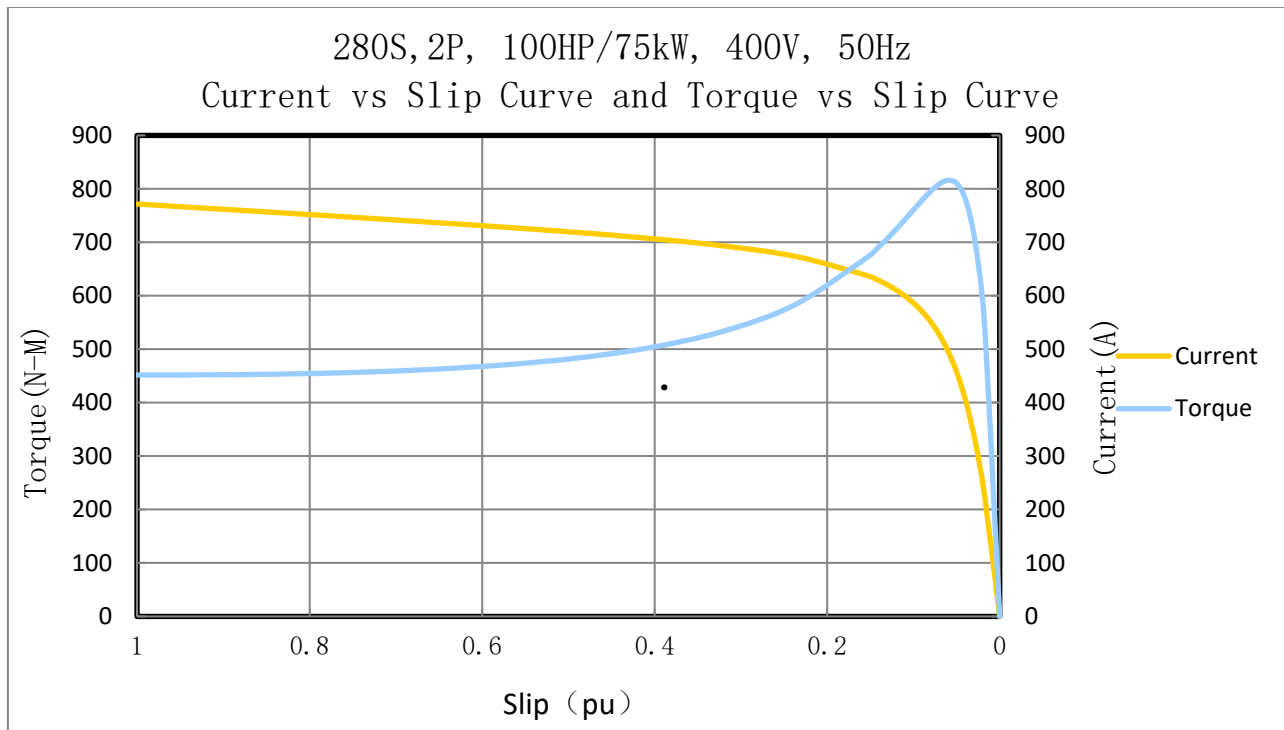
**Performance Characteristic:**

LOAD %	125.0	115.0	100.0	75.0	50.0	25.0	0.0
% EFF	93.52	93.70	93.92	94.09	93.79	91.71	0.00
% PF	92.89	92.90	92.70	91.27	86.94	70.87	40.91
AMPS	155.76	143.01	124.34	94.54	66.38	41.64	31.19

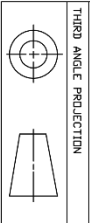
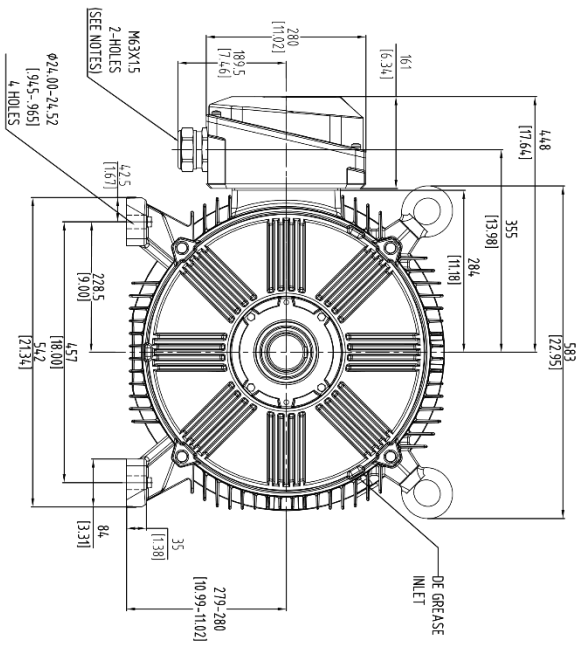
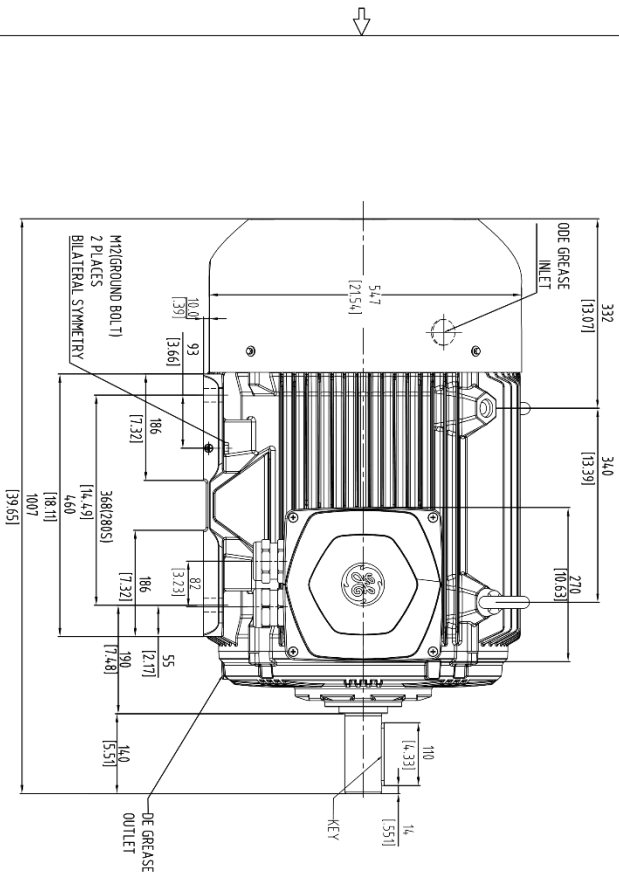
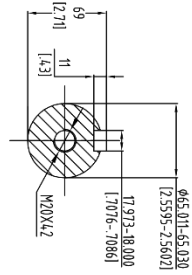
TORQUE(FL) N-m                    241.2    TORQUE(LR)%FL            187    TORQUE(BD)%FL            302  
 AMPS(LR 400V)                    771.7    PF AT START                    40.91%

**Other Useful Information for Application:**

Rotor Inertia (Kg-m <sup>2</sup> ) :	0.81913
Max load inertia (Kg-m <sup>2</sup> ):	3.87688
Load Type:	Square Torque/Speed Characteristic
Voltage:	100%
Number of starts per hour:	2 Cold or 1 Hot
Acceleration Time with maximum inertia (sec):	3.4
Safe stall time (sec): Cold/Hot	35.2/14.3



Marks:



- NOTES
1. CONDUIT BOX IS SUITABLE FOR UP, DOWN OR OTHER SIDE ENTRY.
  2. ALL DIMENSIONS ARE IN MM UNLESS OTHERWISE SPECIFIED.
  3. THE DIMENSIONS SHOWN MARKED WITH THE GROUND SYMBOL MIGHT BE ON A DIFFERENT POSITION DUE TO A DIFFERENT VERSION OF THE DRAWING.

PROPRIETARY INFORMATION

© Copyright 2020 Wologo Electric America LLC. All rights reserved. This drawing is the property of Wologo Electric America LLC and/or its affiliates. It has been provided solely for your use. Copying, reproducing, selling, importing, exporting, displaying, transmitting or distributing in any form or by any means without the written permission of Wologo Electric America LLC is prohibited.

REV	DESCRIPTION	DATE	APPROVED
001	ISAC #20-0596	06/15/2020	SAHD

SIGNATURES	DATE
MODEL	-
DETAIL	ALLEY 07/08/19
CHECKED	SAHD 07/08/19
ENGR	ALLEY 07/08/19
MG	
QUALITY	
ISSUED	SAHD 07/08/19

<p><b>GE INDUSTRIAL MOTORS</b> a Wologo company</p>	<p>TITLE</p> <p><b>OUTLINE, IEC</b></p> <p>280S - 2 B3 TEFC</p> <p>10020 CU. CENTIMETER C/BOX</p>
<p>SOLID MODEL: MODEL NAME</p> <p><b>358B6970AA</b></p>	<p>SIZE / DRAWING</p> <p>B</p>
<p>SCALE: NA</p>	<p>REV</p> <p>001</p>

